



*TERRITORIAL IMPACT ASSESSMENT DELLA COESIONE TERRITORIALE  
DELLE REGIONI ITALIANE*

*Modello, su base place evidence, per la valutazione di policy rivolte allo sviluppo della  
green economy in aree interne e periferie metropolitane*

International Conference

*Territorial Impact Assessment of Territorial Cohesion  
in Italy and Europe*

Rome, 11-12 April 2019

University of Rome "Tor Vergata"

## // Territorial Capital

**Stefano De Rubertis, Università del Salento, Lecce (Apulia)**

---



# Contents

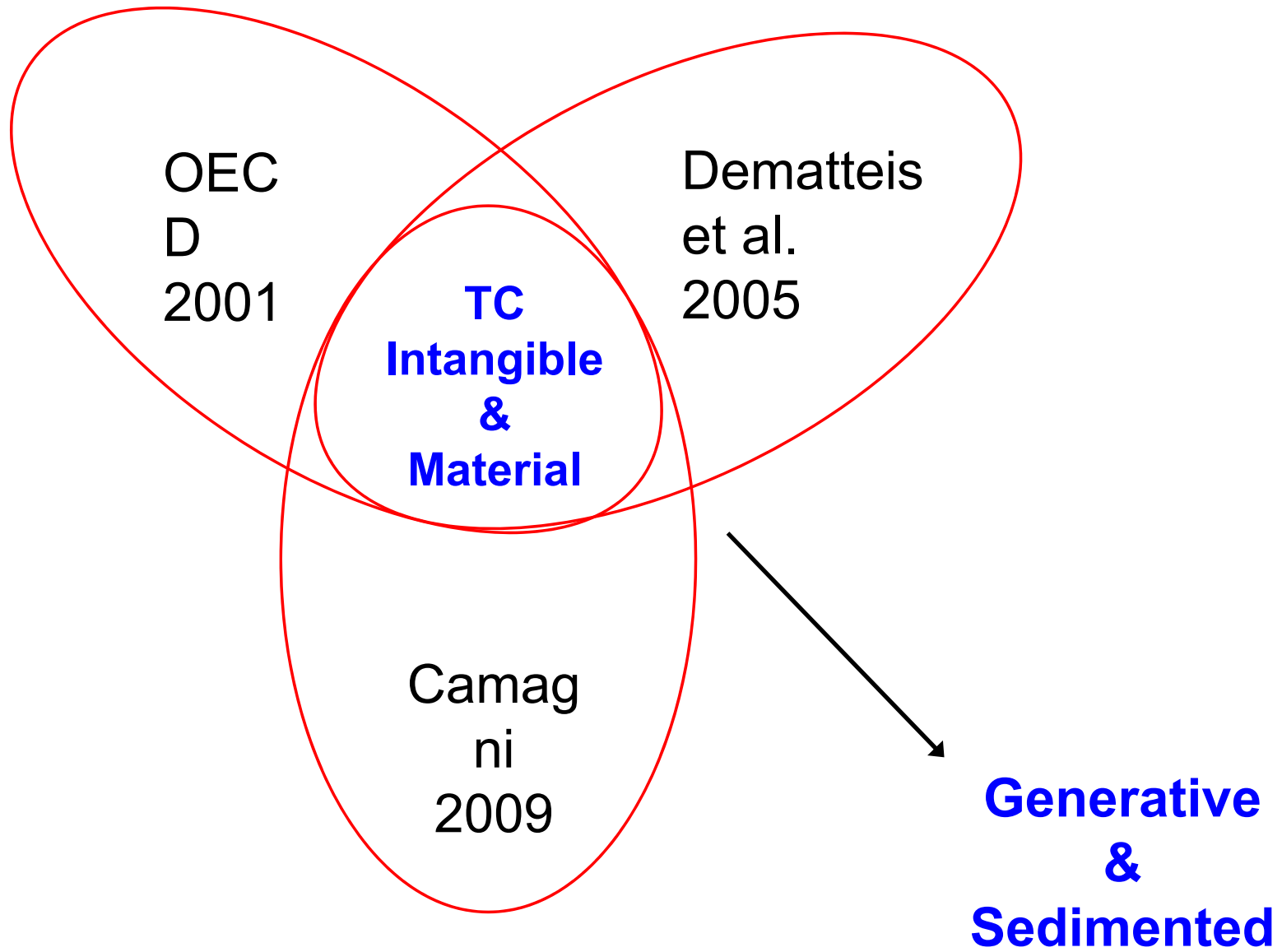
1. Different levels in measurement of territorial capital

1. A meta-level: rethinking territorial capital

1. Conclusions

1

# Different levels in the measurement of territorial capital



# 1<sup>st</sup> level - Generative factors

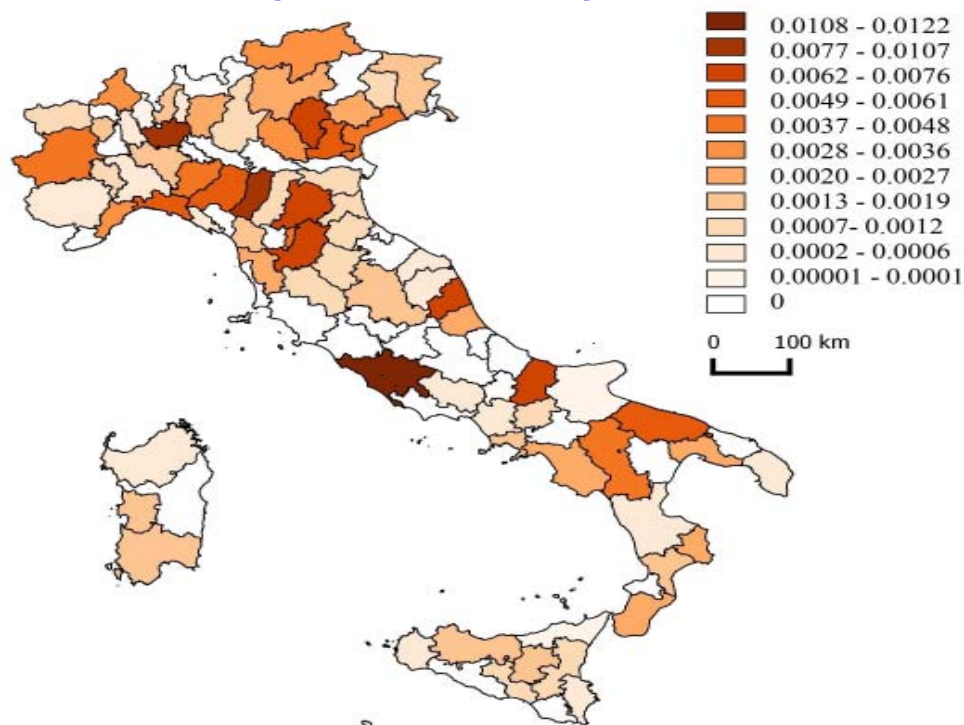
<b>Human capital</b>	<b>Data collection</b>
Quality of human capital	Graduates
Capacity to apply advanced skills and knowledge	Researchers
Capacity to qualify human capital	Employees in education

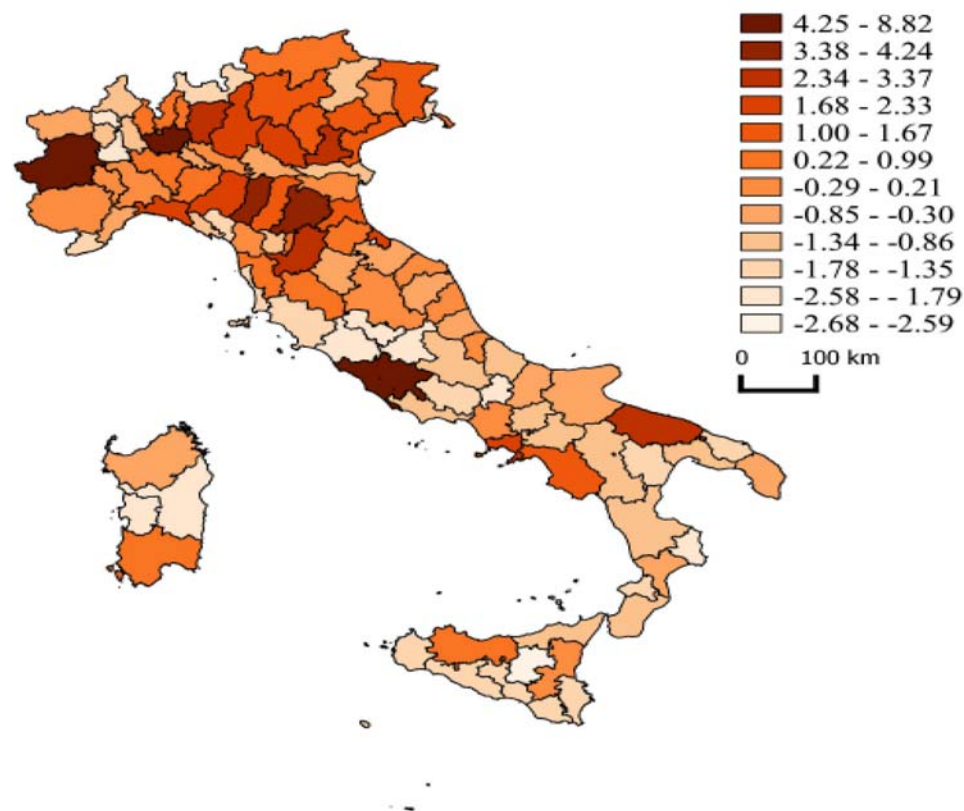
<b>Social capital</b>	<b>Data collection</b>
Propensity to collaboration	Inter-municipal cooperation Network of firms
Trust	Non-profit institutions Volunteers of non-profit institutions
Propensity to respect the rules	Crimes

# 1<sup>st</sup> level – Generative: PCA

R&D employees in humanities  
(%residents)



First component



De Rubertis et al., 2019; Maps By Marilena Labianca; PCA by Camilla Mastromarco

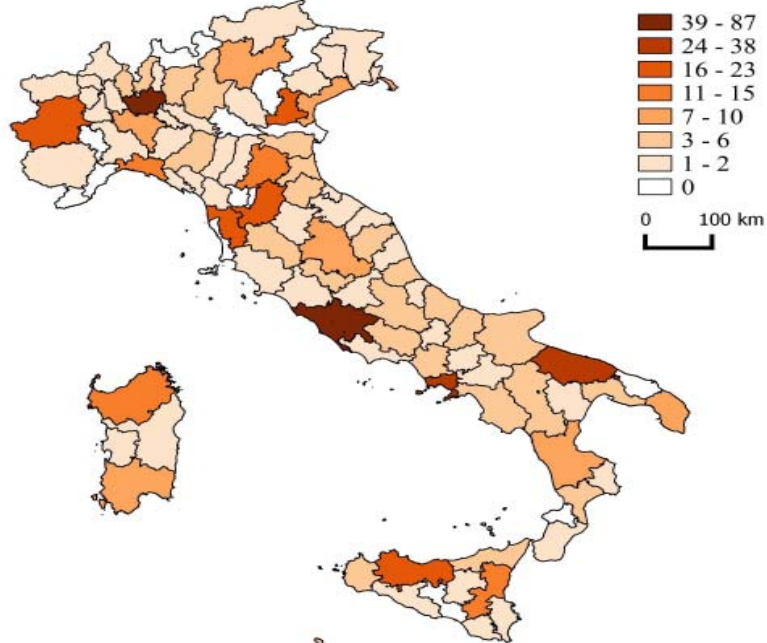
# 1<sup>st</sup> level – Sedimented factors

Component	Data collection
Productive system	Number of firms
Protection of specific value and know-how	Patents, protected designation of origin (PDO), protected geographical indication (PGI)
Local and non-local connection	broadband connection Physical accessibility

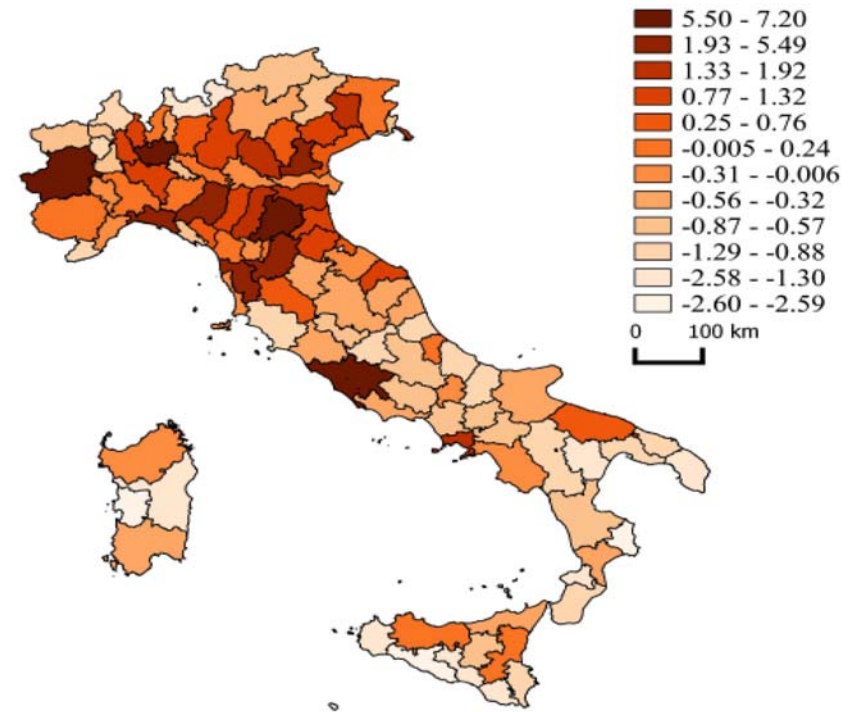


# 1<sup>st</sup> level – Sedimented: PCA

Universities and research centers



First component



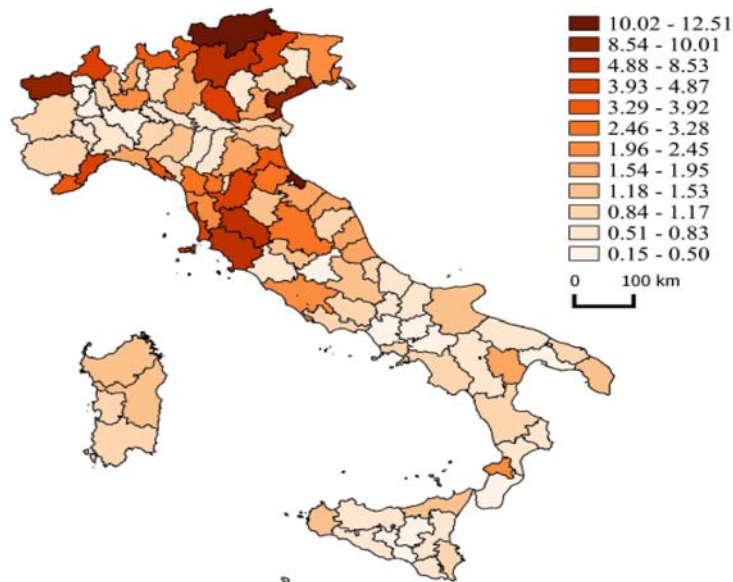
De Rubertis et al., 2019; Maps By Marilena Labianca; PCA by Camilla Mastromarco

## 2<sup>nd</sup> level – Attractivity

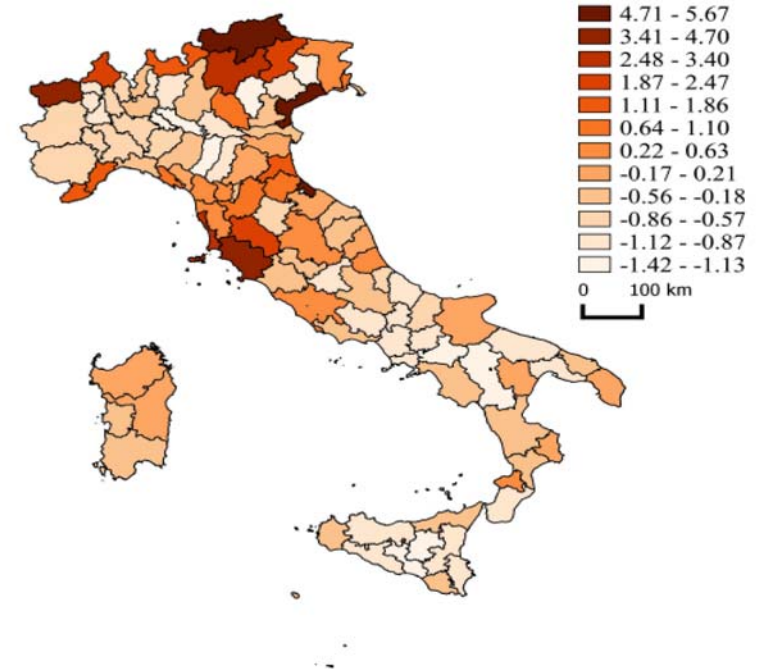
<b>Component</b>	<b>Data collection</b>
Residents	<ul style="list-style-type: none"><li>• demographic dynamics</li><li>• Emigration</li><li>• Bed in tourist accomodations</li></ul>
Non-Residents	<ul style="list-style-type: none"><li>• exports</li><li>• Immigration</li><li>• tourist arrivals</li></ul>

# 2<sup>nd</sup> level – Attractivity: PCA

## Tourist arrivals



## First component



De Rubertis et al., 2019; Maps By Marilena Labianca; PCA by Camilla Mastromarco

2

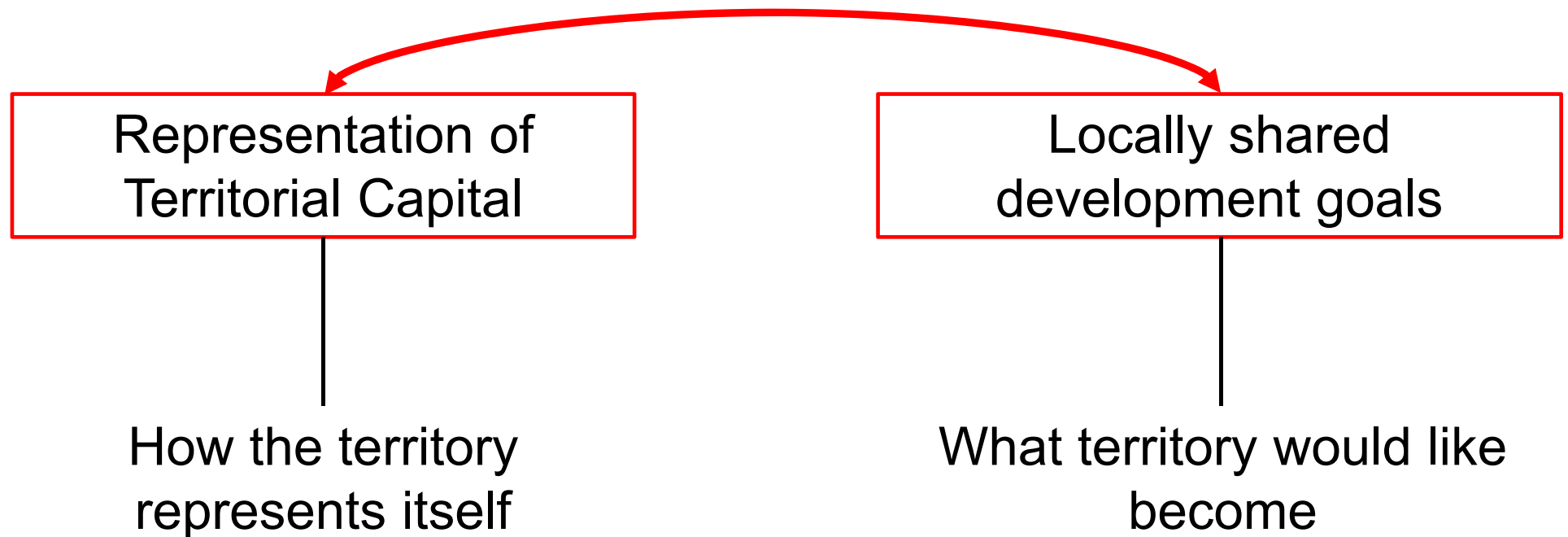
# A meta-level of measurement

We can adopt

1- a mainly (not exclusively) economic growth perspective

2 – a mainly development perspective (after neo-endogenous development approach; Ray, 2001; Lowe, 2006; Neumeyer, 2012; Bosworth et al., 2016)

# TC and development



## Rethinking territorial capital as

- set of socio-cultural elements (generative and sedimented)
- identified and organized (in the community) as a function of the development goals
- **relevant for the value that individuals and communities attribute to it**

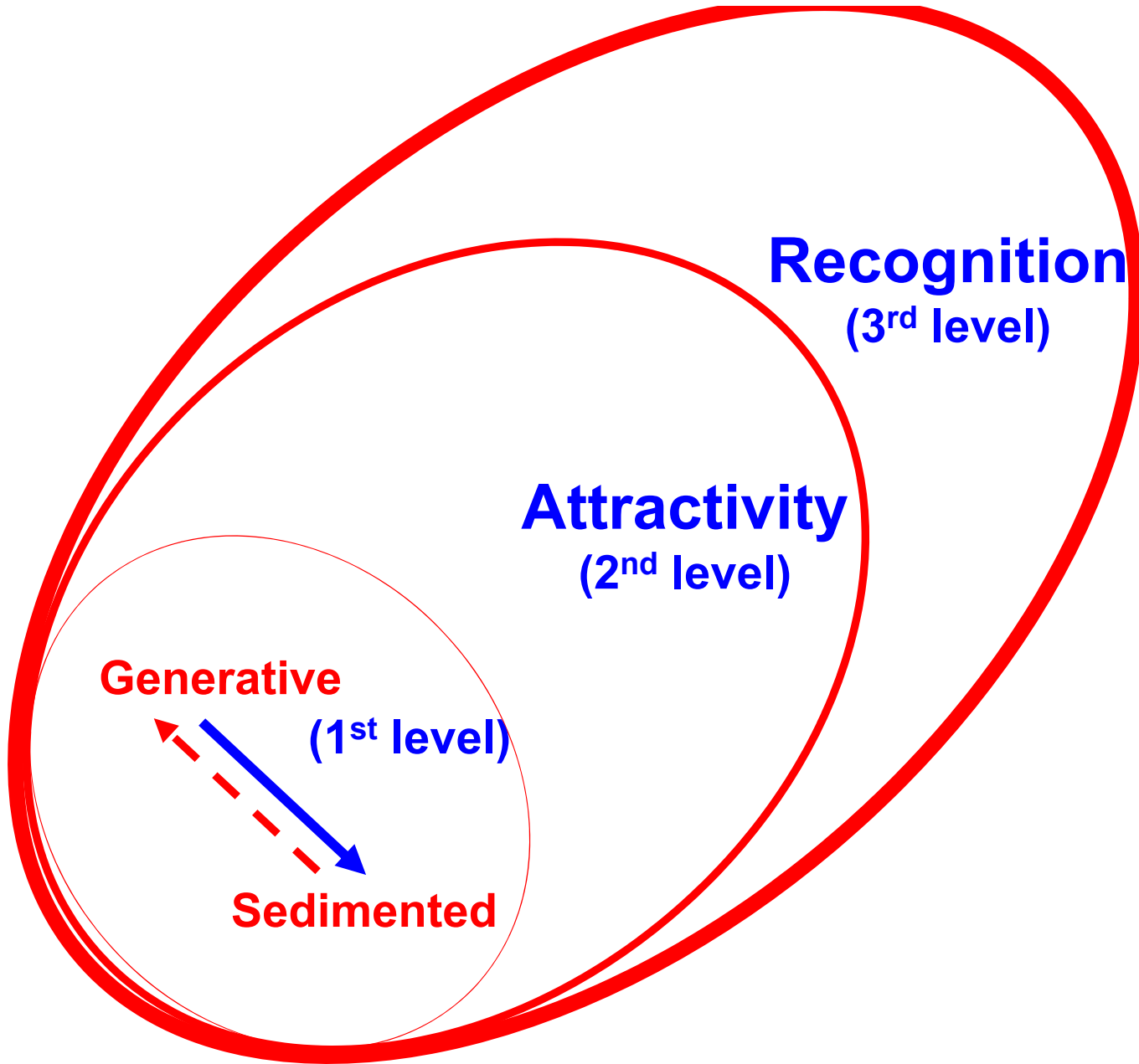
# 3<sup>rd</sup> Level - Recognition/identification

<b>Component</b>	<b>Data collection</b>
<b>Residents' perception</b>	
	What is TC, based on actual local needs and actual local expectations



# 4

## Conclusions and policy suggestions



# Recognition of TC and development approaches

- **Top-down approaches**
- **Bottom-up approaches**
- **Mixed approaches**

# Main references

- Camagni R., 2009, “Territorial capital and regional development”, Capello R. e Nijkamp P. (eds.), *Handbook of regional growth and development theories*, Cheltenham (UK), Edward Elgar, pp. 118-132.
- Dematteis G. e Governa F., 2005, “Il territorio nello sviluppo locale. Il contributo del modello SLoT”, in *Territorialità, sviluppo locale, sostenibilità: il modello SLoT*, Milano, FrancoAngeli, pp. 15-38.
- Neumeier S. (2017): “Social innovation in rural development: identifying the key factors of success”. *The Geographical Journal*, 183(1), 34–46.
- OECD, 2001, *Territorial Outlook. Territorial economy*, Paris, OECD Publications.
- Prezioso M., Coronato M., D'Orazio A., 2016, *Green economy e capitale territoriale. Dalla ricerca geografico-economica, proposte di metodi, indicatori, strumenti*, Bologna, Patron.
- Ray C. (2001): *Culture Economies: a perspective on local rural development in Europe*. Ed. Centre for Rural Economy, Dept. of Agricultural Economics and Food Marketing, University of Newcastle upon Tyne.

**Thank you**

Research Unit of Lecce (Apulia)

Maria Fiori, Isabella Varraso, Stefano De Rubertis, Alessandra  
Giannelli, Antonella Ivona, Rosalina Grumo, Marilena  
Labianca

Prin 2015 – 11-12 April 2019